

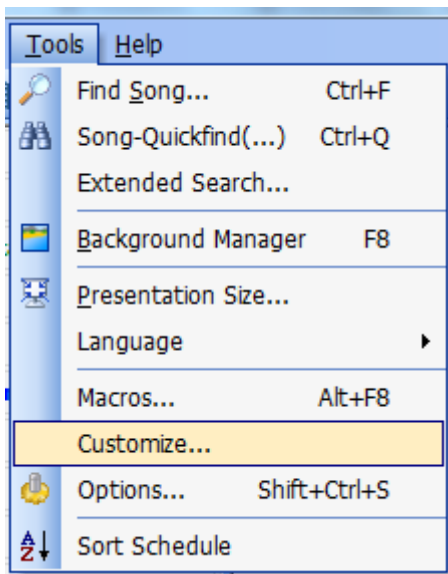
SongBeamer Remote

Introduction

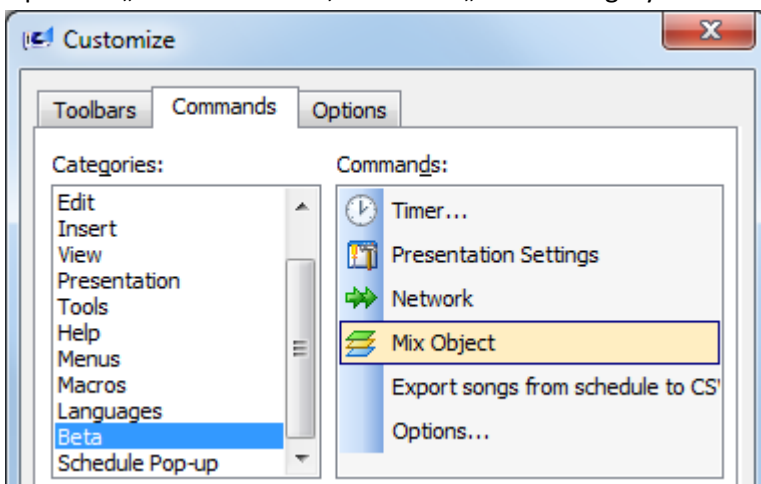
SongBeamer Remote Sender is a tool that makes it possible to synchronize to copies of SongBeamer over a network connection.

Setup

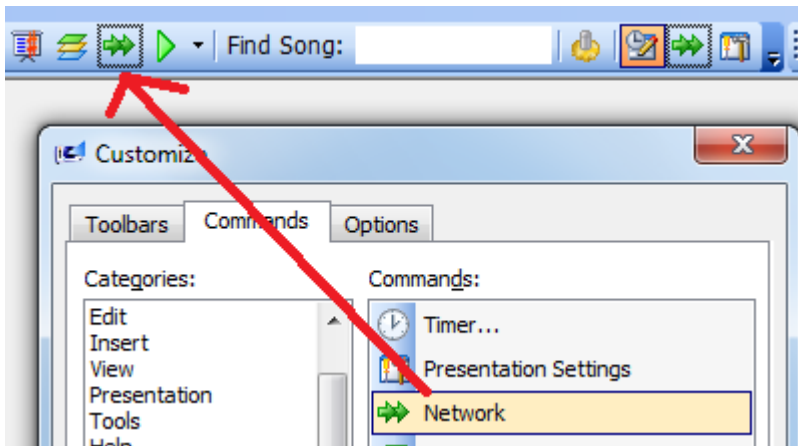
1. Download and unzip the following file:
<http://www.songbeamer.com/bin/tools/SBRemote.zip>
2. Run SBRemoteSender on the main PC that will be used for sending the commands to the other PC
3. Run SBRemoteReceiver on the PC that will be remote controlled
4. Run SongBeamer on both PCs
5. Open the tools menu on the PC that will be used for sending the commands and click on "Customize..."



6. Open the „Commands“ tab, select the „Beta“ Category:



7. Highlight the “Network” icon then press and hold the left mouse button and drag it to an existing toolbar. Click Close.



8. Click on the Network icon on the toolbar so that it will appear “down”. Whenever this icon is down, SongBeamer will send commands to the other PC.

Notes

Both PCs must have the same set of songs. You can use a shared network folder (Tools -> Options -> Folders).

SongBeamer Remote uses the TCP port 19150. Currently it is not possible to change the port.

The tool should only be used in a trusted network.